



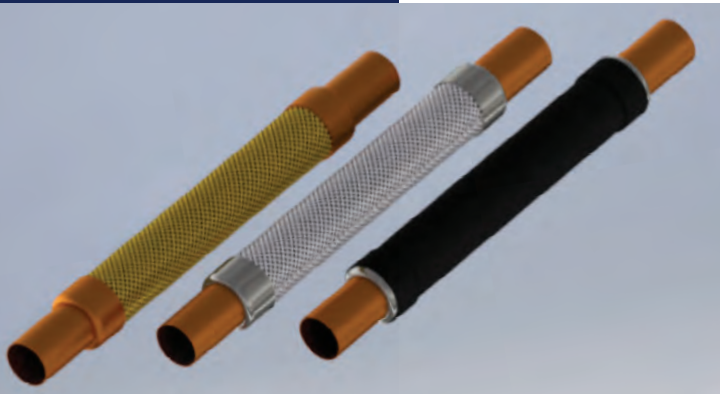
**We have
extended our
product line
to include
High-Pressure
Stainless Steel
Vibration
Absorbers.**

Providing Quality and Service

OmegaFlex® is committed to “quality in the marketplace” -and our complete size range of Bronze and Stainless Steel Vibration Absorbers are no exception.

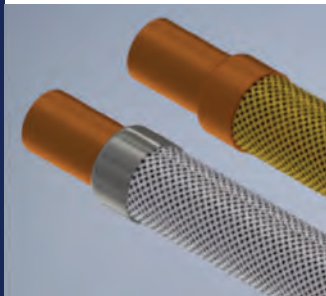
Our “ISO 9001 Certificate of Registration” attests to our ability to design, fabricate, clean, test, performance validate, material certify, and package **to your requirements.** OmegaFlex® is a manufacturer of vibration absorbers who has the commitment to this international quality standard of products.

Service is the first priority of OmegaFlex®. Whether you need assemblies to replenish your stock or to schedule an order for “just-in-time” shipment-OmegaFlex® will respond.



Omegaflex® Vibration Absorbers

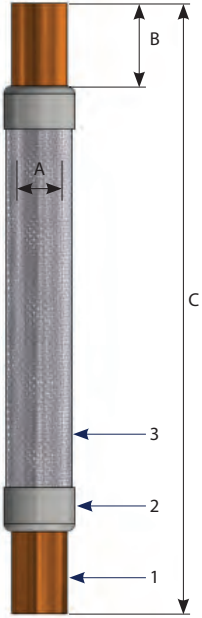
- Cleaned, dried and sealed in bags for use on refrigeration and air conditioning systems.
- Designed for installation in either suction or discharge lines.
- Vibration Absorbers with vapor barrier covers are available.
- Vibration Absorbers are available in custom lengths and with special end configurations.
- Bronze Vibration Absorbers are recognized by UL/CSA (file number: SA 10717).
- Stainless Vibration Absorbers are recognized by UL/CSA (file number: SA 10717).
- OmegaFlex® Vibration Absorbers are compatible with non-ammonium based alternative refrigerants.
- Available in bronze and stainless steel.
- Bronze hose made from 95/5 and bronze braid made from 90/10.
- Stainless hose and braid made from series 300 stainless steel.



Specify OmegaFlex® Vibration Absorbers in refrigeration and air conditioning systems to:

- reduce vibration and noise
- extend compressor life
- allow for horizontal or vertical movement
- relieve stress on the compressor housing
- reduce wear on bearings

OmegaFlex® Stainless Vibration Absorber Specifications



ITEM NUMBER	DESCRIPTION	MATERIAL
1	FEMALE SWEAT COUPLING	COPPER
2	BRAID SLEEVE	300 SERIES STAINLESS STEEL
3	CORRUGATED HOSE AND BRAID	300 SERIES STAINLESS STEEL

PART #	NOMINAL COPPER TUBE SIZE	ACTUAL COPPER TUBE O.D.	"A" NOMINAL HOSE I.D.	"B" FITTING LENGTH	"C" ASSEMBLY LENGTH	MAXIMUM WORKING PRESSURE (PSIG) @ 70 F
OFVS0125	1/8"	1/4"	1/4"	0.715"	7"	1000
OFVS0125A	1/8"	1/4"	1/4"	0.715"	7-1/2"	1000
OFVS0250	1/4"	3/8"	1/4"	0.725"	8-1/4"	1000
OFVS0375	3/8"	1/2"	3/8"	0.872"	9"	1000
OFVS0500	1/2"	5/8"	1/2"	1.050"	9-3/4"	800
OFVS0625	5/8"	3/4"	1/2"	1.318"	10"	800
OFVS0625A	5/8"	3/4"	3/4"	1.318"	11-1/4"	640
OFVS0750	3/4"	7/8"	3/4"	1.627"	11-1/2"	640
OFVS0750HP	3/4"	7/8"	3/4"	1.627"	11-1/2"	675
OFVS1000	1"	1-1/8"	1"	1.926"	13"	600
OFVS1000HP	1"	1-1/8"	1"	1.926"	13"	652
OFVS1250	1-1/4"	1-3/8"	1-1/4"	1.886"	14-3/4"	580
OFVS1500	1-1/2"	1-5/8"	1-1/2"	2.148"	17"	450
OFVS2000	2"	2-1/8"	2"	2.646"	20"	320
OFVS2500	2-1/2"	2-5/8"	2-1/2"	3.017"	24"	250
OFVS3000	3"	3-1/8"	3"	3.442"	27"	270
OFVS3500	3-1/2"	3-5/8"	3-1/2"	4"(REF)	32-5/8"	170
OFVS4000	4"	4-1/8"	4"	4.260"	33-3/8"	160

OmegaFlex® Bronze Vibration Absorber Specifications



ITEM NUMBER	DESCRIPTION	MATERIAL
1	FEMALE SWEAT COUPLING	COPPER
2	BRAID SLEEVE	COPPER
3	CORRUGATED HOSE AND BRAID	BRONZE

PART #	NOMINAL COPPER TUBE SIZE	ACTUAL COPPER TUBE O.D.	"A" NOMINAL HOSE I.D.	"B" FITTING LENGTH	"C" ASSEMBLY LENGTH	MAXIMUM WORKING PRESSURE (PSIG) @ 70 F
OFV0125	1/8"	1/4"	1/4"	0.715"	7"	450
OFV0125A	1/8"	1/4"	1/4"	0.715"	7-1/2"	450
OFV0250	1/4"	3/8"	1/4"	0.725"	8-1/4"	450
OFV0375	3/8"	1/2"	3/8"	0.872"	9"	450
OFV0500	1/2"	5/8"	1/2"	1.050"	9-3/4"	450
OFV0625	5/8"	3/4"	1/2"	1.318"	10"	440
OFV0625A	5/8"	3/4"	3/4"	1.318"	11-1/4"	440
OFV0750	3/4"	7/8"	3/4"	1.627"	11-1/2"	440
OFV1000	1"	1-1/8"	1"	1.926"	13"	400
OFV1250	1-1/4"	1-3/8"	1-1/4"	1.886"	14-3/4"	400
OFV1500	1-1/2"	1-5/8"	1-1/2"	2.148"	17"	400
OFV2000	2"	2-1/8"	2"	2.646"	20"	310
OFV2500	2-1/2"	2-5/8"	2-1/2"	3.017"	24"	250
OFV3000	3"	3-1/8"	3"	3.442"	27"	240
OFV4000	4"	4-1/8"	4"	4.260"	33-3/8"	130