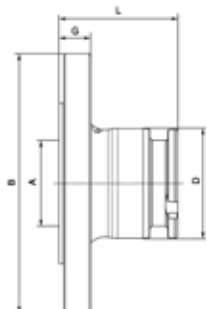


NovaFlex[®] Hi-Flow[™] Dry-Release[™] Couplings 'HDC'

HDC-ADF 2" Stainless Steel 316L

Dry-Release Flanged Adapter

PART ID: 8ADFSV02



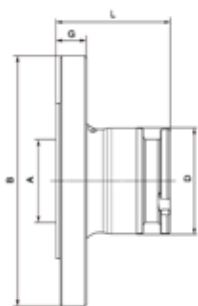
Material: Stainless Steel 316L

NPS Size	D Socket	A Connection	B Flange Diameter	G Flange Width	L Length	Weight kg/lbs	Pressure
2"	70 mm	ANSI B 16.5 2" Class 150	152.4 mm/6"	19.1 mm/0.75"	75 mm/2.95"	2.8 Kg/6.17lbs	16bar/232psi

HDC-ADF 2" Aluminum

Dry-Release Flanged Adapter

PART ID: 8ADFAV02



Material: Aluminum

NPS Size	D Socket	A Connection	B Flange Diameter	G Flange Width	L Length	Weight kg/lbs	Pressure
2"	70 mm	ANSI B 16.5 2" Class 150	152.4 mm/6"	19.1 mm/0.75"	75 mm/2.95"	1.1 Kg/2.42lbs	16bar/232psi

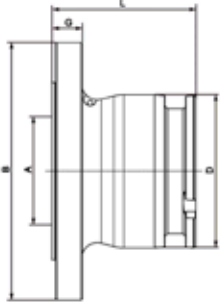
Other flange configurations available.

NovaFlex HDC[™] couplers and adapters equipped standard with Viton[®] seals. Other elastomers available upon request.

HDC-ADF 3" Stainless Steel 316L

Dry-Release Flanged Adapter

PART ID: 8ADFSV03



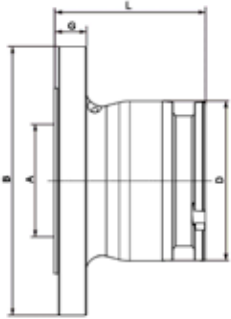
Material: Stainless Steel 316L

NPS Size	D Socket	A Connection	B Flange Diameter	G Flange Width	L Length	Weight kg/lbs	Pressure
3"	119 mm	ANSI B 16.5 2" Class 150	190.5 mm/7.5"	23.9 mm/0.94"	112 mm/4.4"	6.7 Kg/14.77lbs	16bar/232psi

HDC-ADF 3" Aluminum

Dry-Release Flanged Adapter

PART ID: 8ADFAV03



Material: Aluminum

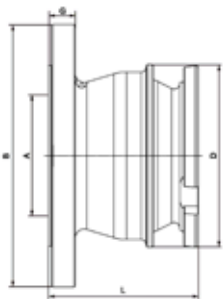
NPS Size	D Socket	A Connection	B Flange Diameter	G Flange Width	L Length	Weight kg/lbs	Pressure
3"	119 mm	ANSI B 16.5 2" Class 150	190.5 mm/7.5"	23.9 mm/0.94"	112 mm/4.4"	2.9 Kg	16bar/232psi

NovaFlex[®] Hi-Flow[™] Dry-Release[™] Couplings 'HDC'

HDC-ADF 4" Stainless Steel 316L

Dry-Release Flanged Adapter

PART ID: 8ADFSV04



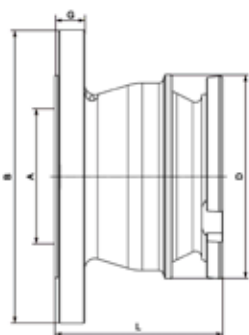
Material: Stainless Steel 316L

NPS Size	D Socket	A Connection	B Flange Diameter	G Flange Width	L Length	Weight kg/lbs	Pressure
4"	164 mm	ANSI B 16.5 2" Class 150	228.6 mm/9"	23.9 mm/0.94"	134 mm/5.27"	11.2 Kg/24.69lbs	16bar/232psi

HDC-ADF 4" Aluminum

Dry-Release Flanged Adapter

PART ID: 8ADFAV04



Material: Aluminum

NPS Size	D Socket	A Connection	B Flange Diameter	G Flange Width	L Length	Weight kg/lbs	Pressure
4"	164 mm	ANSI B 16.5 2" Class 150	254 mm/10"	23.9 mm/0.94"	134 mm/5.27"	4.9 Kg/10.80lbs	16bar/232psi