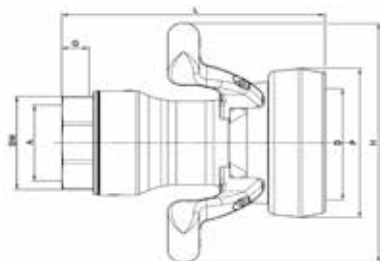


# NovaFlex<sup>®</sup> Hi-Flow<sup>™</sup> Dry-Release<sup>™</sup> Couplings 'HDC'

## HDC-CPL 3" Stainless Steel 316L

Dry-Release Coupler

PART ID: 8CPLSV03



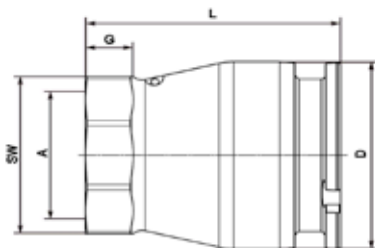
Material: Stainless Steel 316L

NPS Size	D Socket	A Connection	G Thread Length	L Length	P Protection Ring	H (with Handles)	Weight kg/lbs	Pressure
3"	119 mm	BSP ISO 228-G 3	24 mm/0.94"	232.5 mm/9.15"	160 mm	258mm	8.7 Kg/19.18 lbs	25bar/362psi
3"	119 mm	NPT ANSI B2.1	34 mm/1.33"	242.0 mm/9.53"	160 mm	258mm	9.0 Kg/19.84lbs	25bar/362psi

## HDC-ADP 3" Stainless Steel 316L

Dry-Release Adapter

PART ID: 8ADPSV03



Material: Stainless Steel 316L

NPS Size	D Socket	A Connection	G Thread Length	L Length	Weight kg/lbs	Pressure
3"	119 mm	BSP ISO 228-G 3	24 mm/0.94"	134 mm/5.27"	3.4 Kg/7.49lbs	25bar/362psi
3"	119 mm	NPT ANSI B2.1	34 mm/1.33"	144 mm/5.66"	3.7 Kg/8.15lbs	25bar/362psi