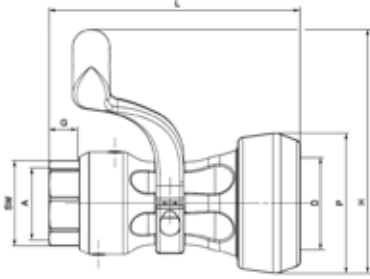


HDC-CPL 1" Stainless Steel 316L

Dry-Release Coupler

PART ID: 8CPLSV01



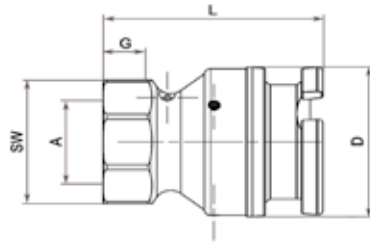
Material: Stainless Steel 316L

NPS Size	D Socket	A Connection	G Thread Length	L Length	P (without handle) Protection Ring	H (with Handle)	Weight kg/lbs	Pressure
1"	56 mm	BSP ISO 228-G 1	11 mm/0.43"	135.5 mm/5.33"	81 mm	141 mm	1.78 Kg/3.92lbs	25bar/362psi
1"	56 mm	NPT ANSI B2.1	22 mm/0.87"	135.5 mm/5.33"	81 mm	141 mm	1.75 Kg/3.85lbs	25bar/362psi

HDC-ADP 1" Stainless Steel 316L

Dry-Release Adapter

PART ID: 8ADPSV01



Material: Stainless Steel 316L

NPS Size	D Socket	A Connection	G Thread Length	L Length	Weight kg/lbs	Pressure
1"	56 mm	BSP ISO 228-G 1	11 mm/0.43"	68.5 mm/2.69"	0.52 Kg/1.15 lbs	25bar/362psi
1"	56 mm	NPT ANSI B2.1	22 mm/0.87"	77.5 mm/3.05"	0.59 Kg/1.30 lbs	25bar/362psi

Viton® is a registered trademark of DuPont Performance.

All data presented based on ambient temperature.

Novaflex HDC™ couplers and adapters equipped standard with Viton® seals. Other elastomers available upon request.